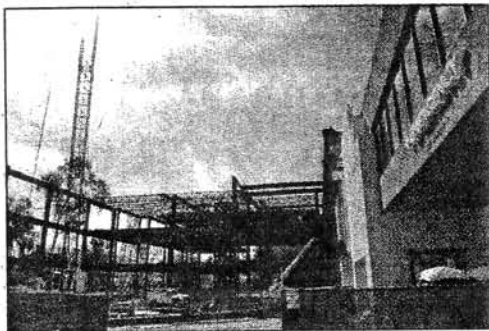


SCOTTSDALE Tribune

WEDNESDAY MARCH 5, 2008



MAKING ROOM:

The three-story tower at Scottsdale Healthcare's Shea campus is planned to accommodate patient beds.

SUBMITTED

Scottsdale Healthcare Shea bridge tower takes shape

By **JULIE JANOVSKY**
TRIBUNE

Construction is well under way on a \$16 million medical bridge tower at Scottsdale Healthcare's Shea campus.

Since September, construction crews have been working on the three-story, 39,000-square-foot tower, situated near the Piper Surgery Center on the campus at 9003 E. Shea Blvd.

The project was conceived to accommodate the need for patient beds, reports Scottsdale Healthcare.

"(It's) to expand inpatient capacity to better serve the community," said Kim Post, vice president of operations for the Scottsdale Healthcare Shea campus.

The tower, which has been in the planning stages for a little over a year, is expected to pro-

vide future lobby space on its first floor and will house 28 inpatient medical/surgical/telemetry capable beds and a nine-bed outpatient observation unit on its second floor. The third level will be shelled for future duplication of the second floor.

Post said the tower will also be wired to care for patients who require cardiac monitoring.

The health care company said that during construction, complimentary valet service will be available at the main entrance for all patients and families. Volunteers will also be available at the main entrance to escort patients and their families to the services at the north end of the building.

The project is expected to be completed in December.

CONTACT WRITER: (480) 970-2369
or jjanovsky@evtrib.com